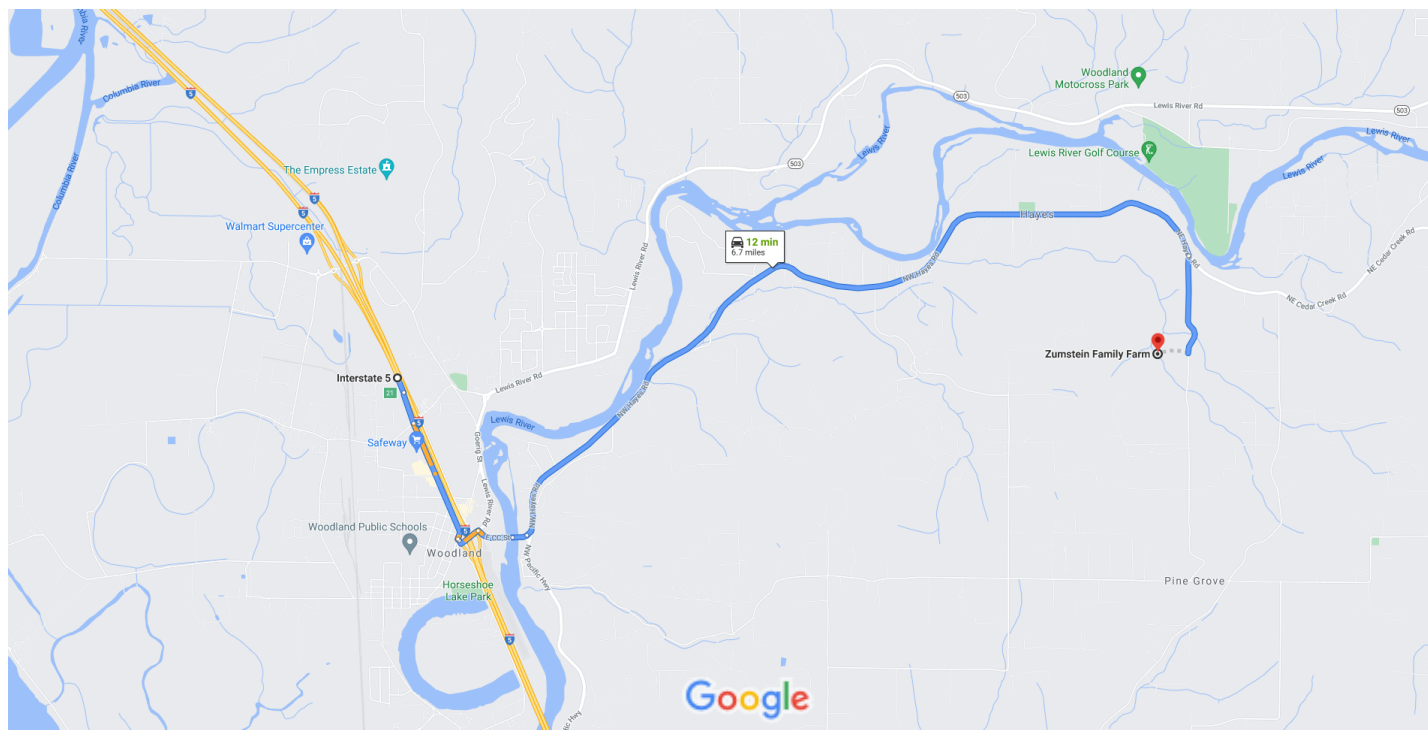




I-5, Woodland, WA 98674 to Zumstein Family Farm

Drive 6.7 miles, 12 min



Map data ©2021 Google 2000 ft

I-5

Woodland, WA 98674

Take Exit 21 to Pacific Ave. Take exit 21 from I-5 S

- ↑ 1. Head southeast on I-5 S
20 s (0.3 mi)
- ↘ 2. Take exit 21 toward WA-503 E/Woodland/Cougar
463 ft
0.2 mi

Follow Pacific Ave to Lewis River Rd

- ↑ 3. Continue onto Pacific Ave
3 min (0.7 mi)
Pass by Valvoline Instant Oil Change (on the right in 0.4 mi)
- ↶ 4. Turn left to stay on Pacific Ave
0.7 mi
69 ft

Follow NW Hayes Rd to NE 12th Ave in Clark County

- ↶ 5. Turn left onto Lewis River Rd
7 min (5.1 mi)
0.1 mi

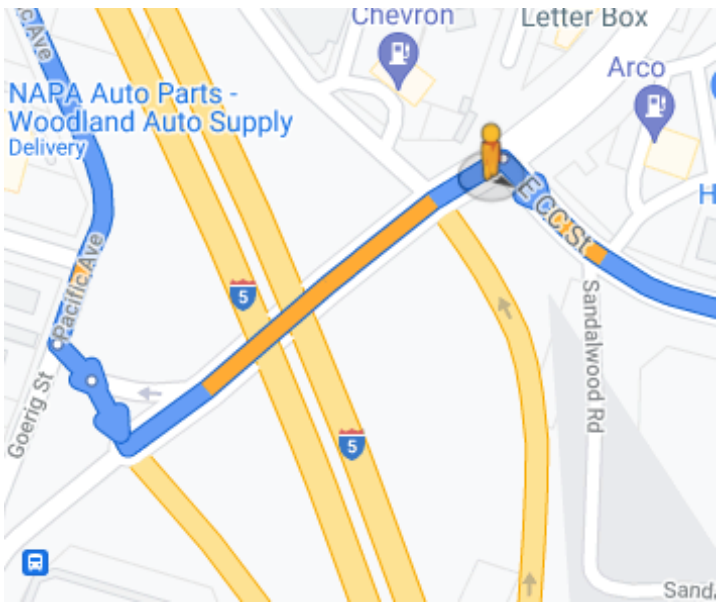
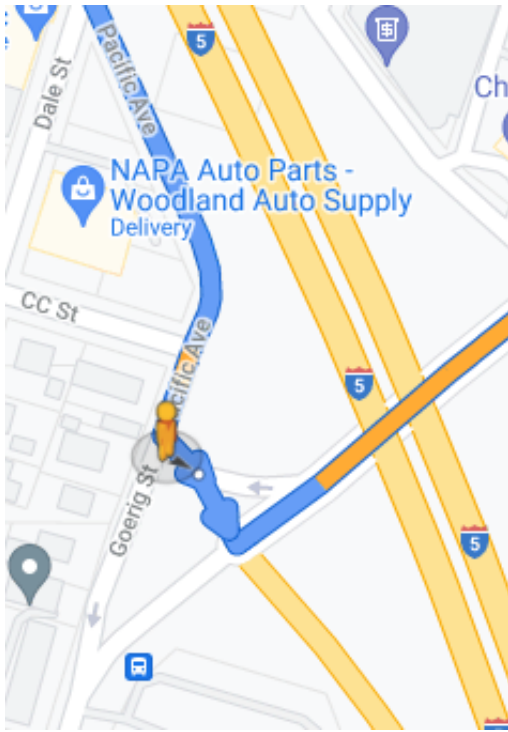
6. Turn right onto E CC St
0.2 mi
7. Continue onto Bridge 80
417 ft
8. Continue onto NW Hayes Rd
4.7 mi
9. Turn right onto NE 12th Ave
1 min (0.6 mi)

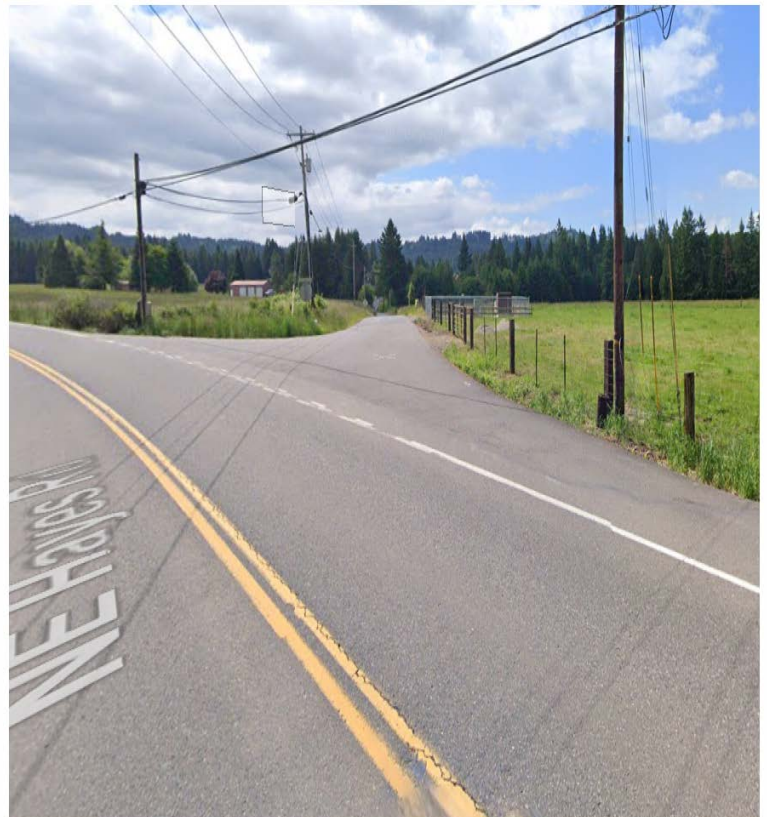
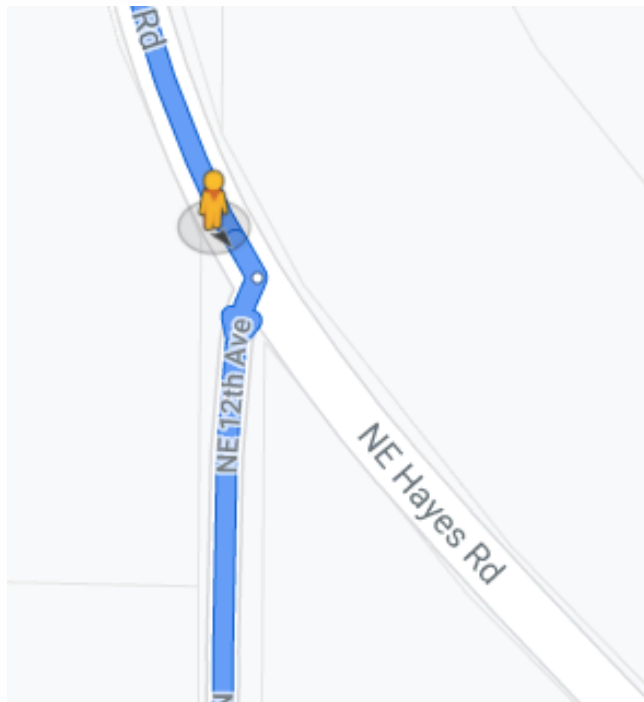
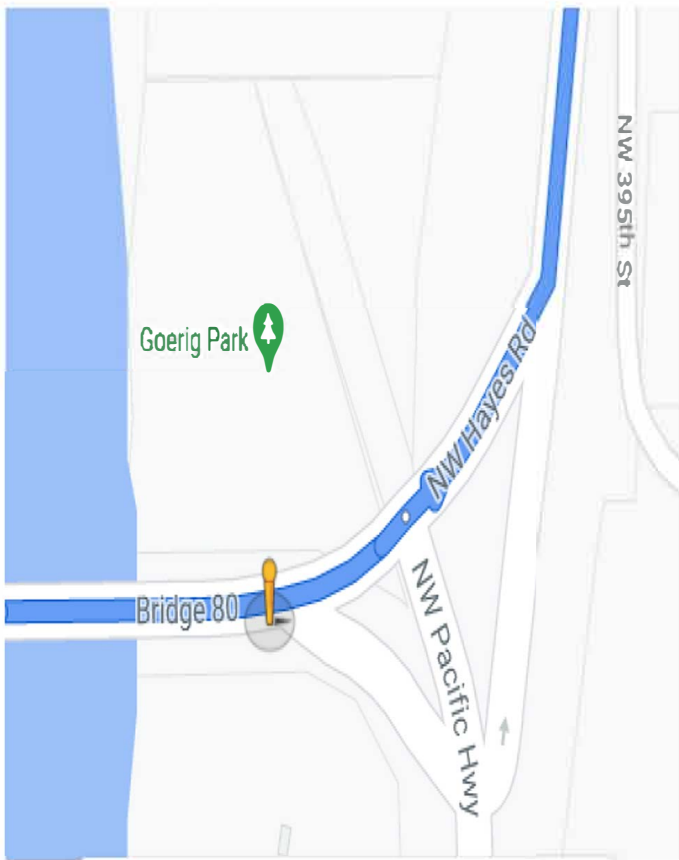
Zumstein Family Farm

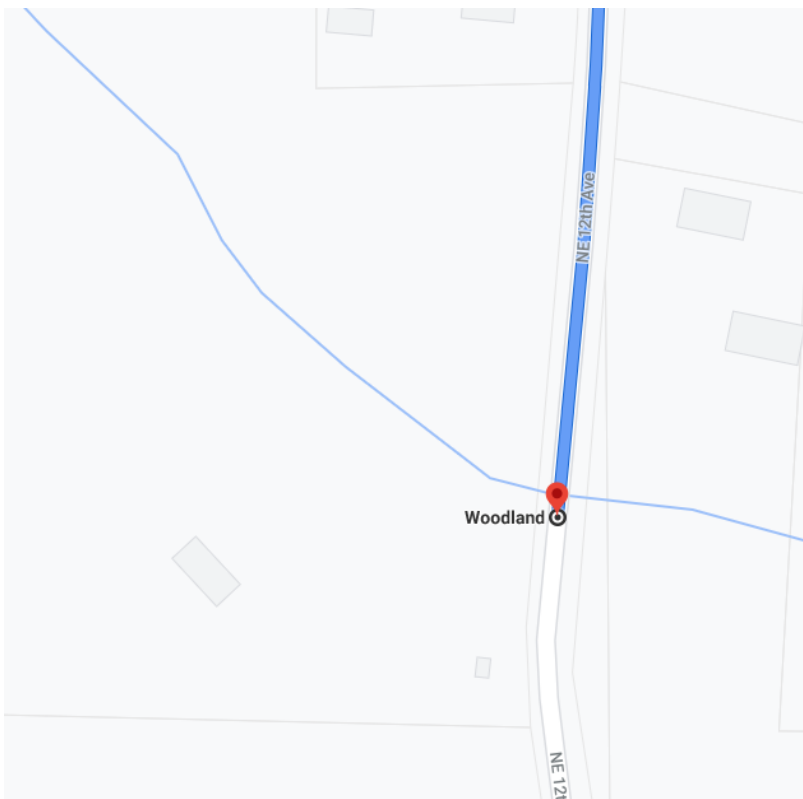
41316 NE 12th Ave, Woodland, WA 98674

These directions are for planning purposes only. You may find that construction projects, traffic, weather, or other events may cause conditions to differ from the map results, and you should plan your route accordingly. You must obey all signs or notices regarding your route.









Keep driving on NE 12th Ave. You will pass the house with the sign for the Zumstein farm. keep going until you see a sign for WCWA tactical. You will pull into the driveway on the right.

